

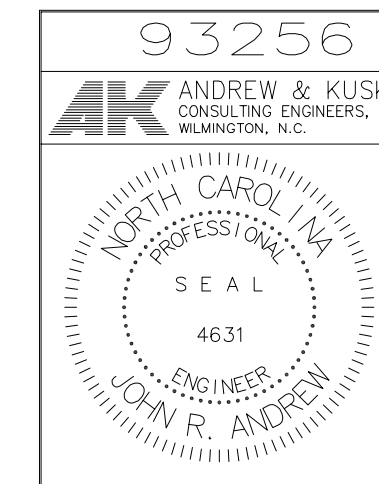
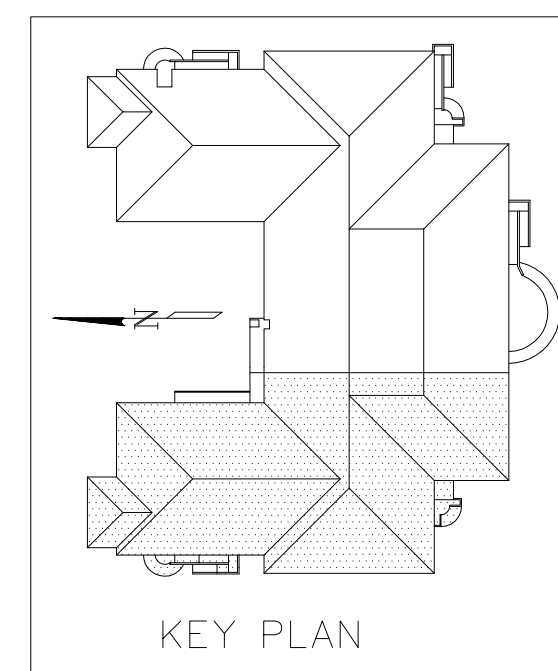
FIRST FLOOR FRAMING PLAN- WEST

1/8" = 1' - 0"

T.O.S. - 6-1/2" U.N.O.

#4 VERT @ 16" O.C.
TOTAL PERIMETER
SEE SECTION G/S18

COMPOSITE - UNSHORED FLOOR SYSTEM USING: 2" GALV. STEEL DECK TYPE BP2
20 GA WITH 4-1/2" NORMAL WEIGHT CONC. SLAB WITH 6x6 - W2.9/W2.9
W.W.F. (TYPICAL)
NOTE: CONTRACTOR MAY SHORE SYSTEM TO AVOID EXTRA CONC. DUE TO CONSTRUCTION
DEFLECTION IF SHORING IS USED, SHORES MUST REMAIN IN PLACE UNTIL CONC. HAS
ATTAINED 75% OF f_c



DRAWING REVISIONS:		
NO.	DATE	REMARKS

DATE: 5/16/94
PROJECT#: 9305
DESIGNED BY: JRA
DRAWN BY: RDT
CHECKED BY: JRA

